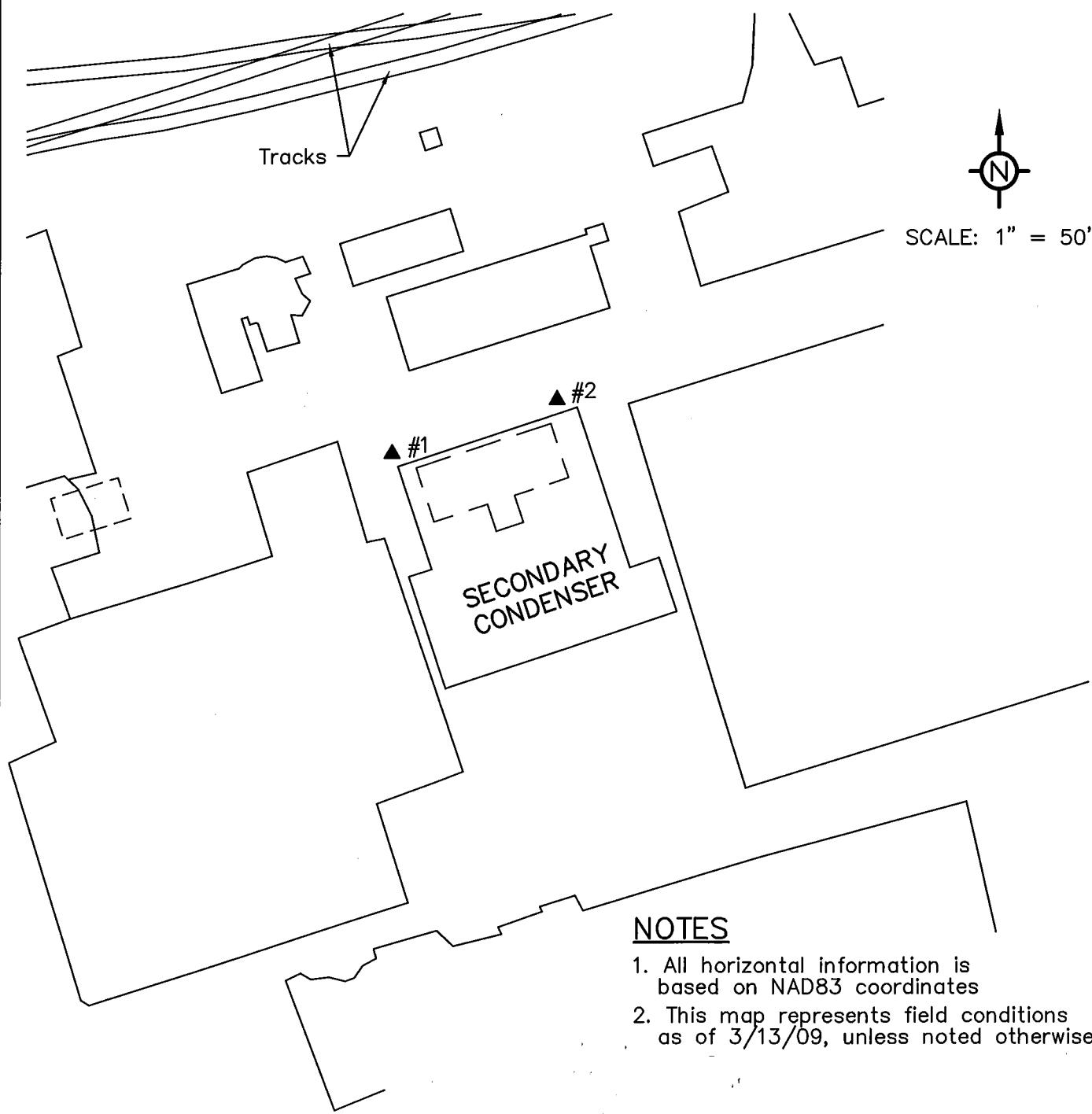


SECONDARY CONDENSER AREA

PHOSPHINE SAMPLE SITES



NOTES

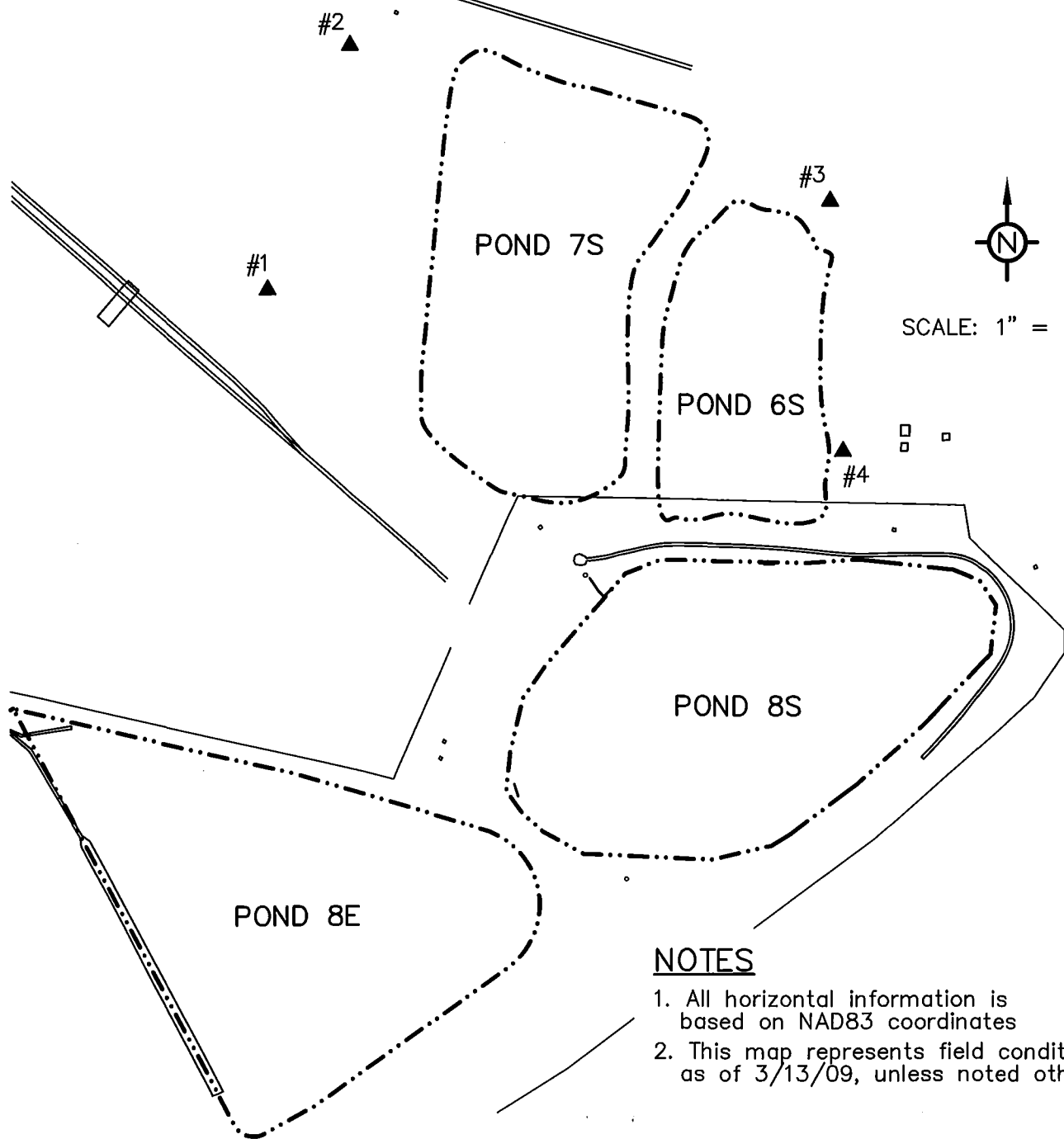
1. All horizontal information is based on NAD83 coordinates
2. This map represents field conditions as of 3/13/09, unless noted otherwise.

PH3 Sample #	Max ppm	Mean ppm	Temp F	Northing	Easting
#1	0.13	0.12	3.8	452141.4	556632.8
#2	0.36	0.29	2.9	452160.6	556691.0

SK07042-04-S3

PONDS 6S & 7S AREA

PHOSPHINE SAMPLE SITES



NOTES

1. All horizontal information is based on NAD83 coordinates
2. This map represents field conditions as of 3/13/09, unless noted otherwise.

PH3 Sample #	Max ppm	Mean ppm	Temp F	Northing	Easting
#1	0.04	0.02	2.1	450750.6	554031.5
#2	0.00	0.00	3.5	451076.4	554141.4
#3	0.00	0.00	1.7	450869.6	554788.1
#4	0.00	0.00	3.2	450534.5	554806.2

SK07042-04-S1

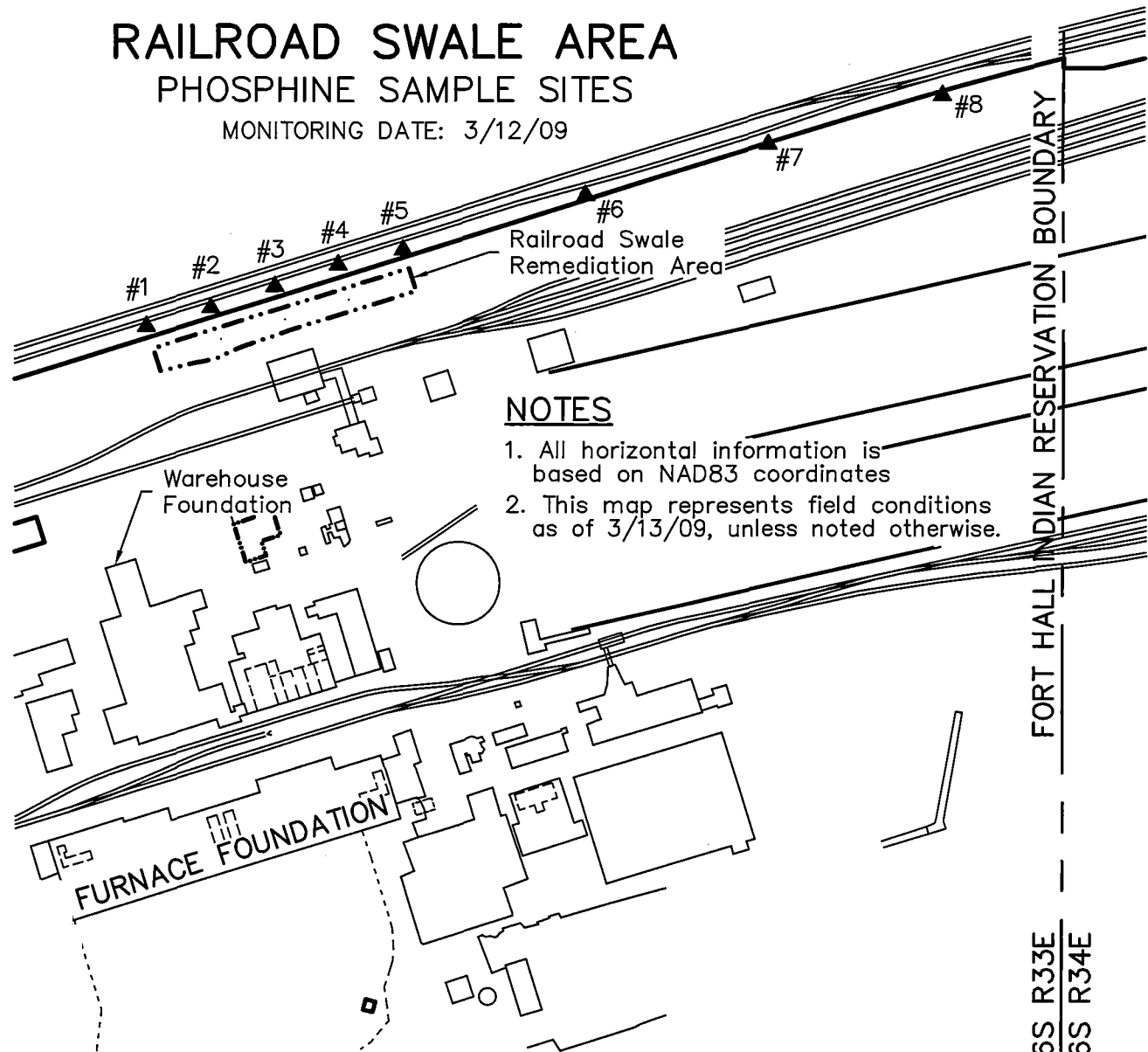
A & E ENGINEERING INC.
A&E JOB NO. 2007-042 PLOTSCALE: 1=200

RAILROAD SWALE AREA PHOSPHINE SAMPLE SITES

MONITORING DATE: 3/12/09



SCALE: 1" = 200'



NOTES

1. All horizontal information is based on NAD83 coordinates
2. This map represents field conditions as of 3/13/09, unless noted otherwise.

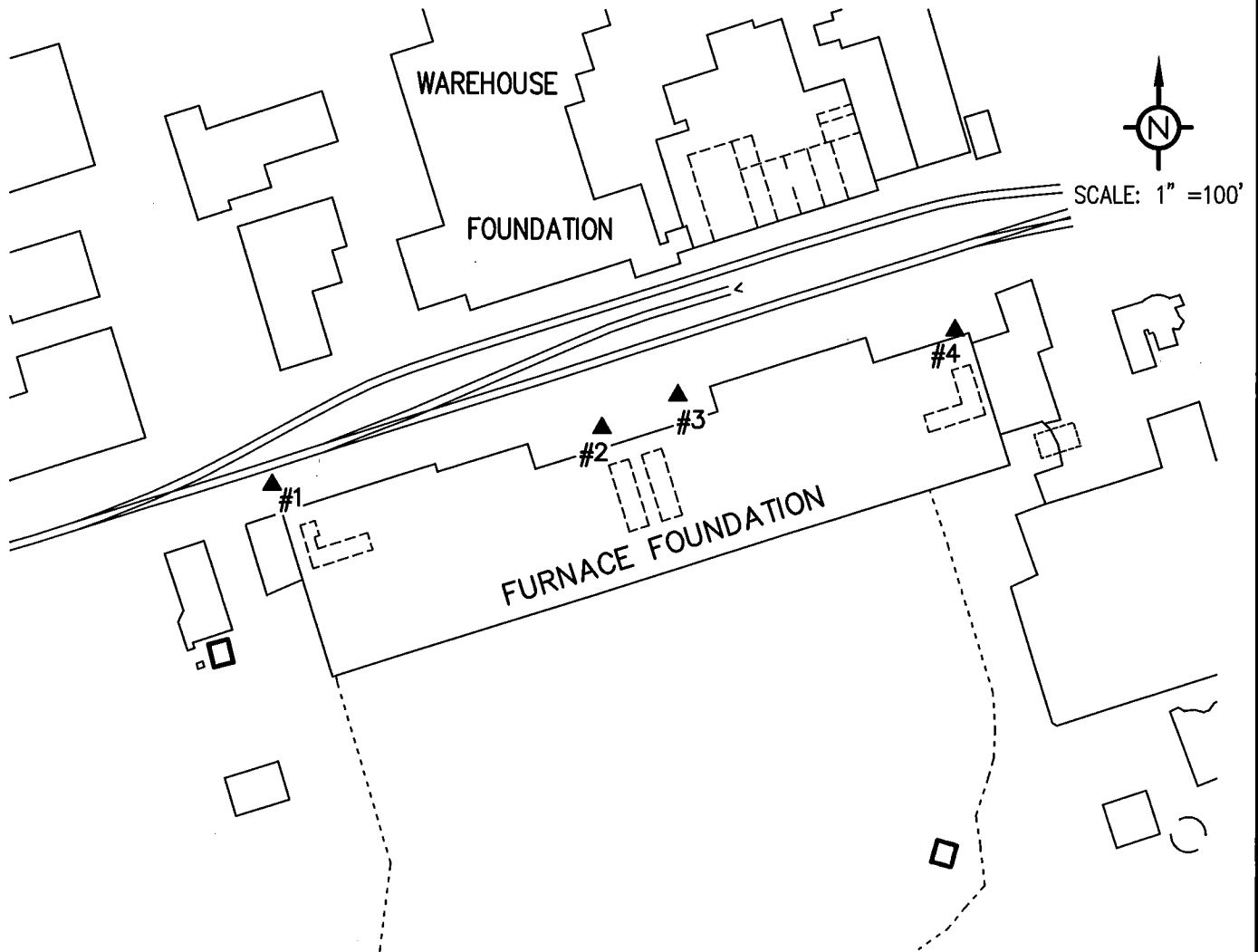
PH3 Sample #	Max ppm	Mean ppm	Temp °F	Northing	Easting
#1	0.03	0.03	1.9	452733.5	556176.2
#2	0.00	0.00	2.9	452757.0	556257.8
#3	0.09	0.07	1.0	452784.1	556339.2
#4	0.13	0.12	2.3	452811.6	556419.5

PH3 Sample #	Max ppm	Mean ppm	Temp °F	Northing	Easting
#5	0.02	0.00	0.7	452830.6	556501.9
#6	0.25	0.20	1.3	452899.5	556733.9
#7	0.05	0.04	3.4	452964.0	556964.8
#8	0.40	0.30	3.1	453026.9	557184.5

SK07042-04-S5

A & E ENGINEERING INC.
A&E JOB NO. 2007-042 PLOTSCALE: 1=200

FURNACE BUILDING AREA PHOSPHINE SAMPLE SITES



PH3 Sample #	Max ppm	Mean ppm	Temp F	Northing	Easting
#1	0.22	0.15	1.4	452095.5	556044.7
#2	0.93	0.82	1.9	452130.2	556247.4
#3	0.19	0.10	0.7	452149.9	556294.0
#4	0.10	0.10	1.9	452189.5	556463.6

NOTES

1. All horizontal information is based on NAD83 coordinates
2. This map represents field conditions as of 3/13/09, unless noted otherwise.

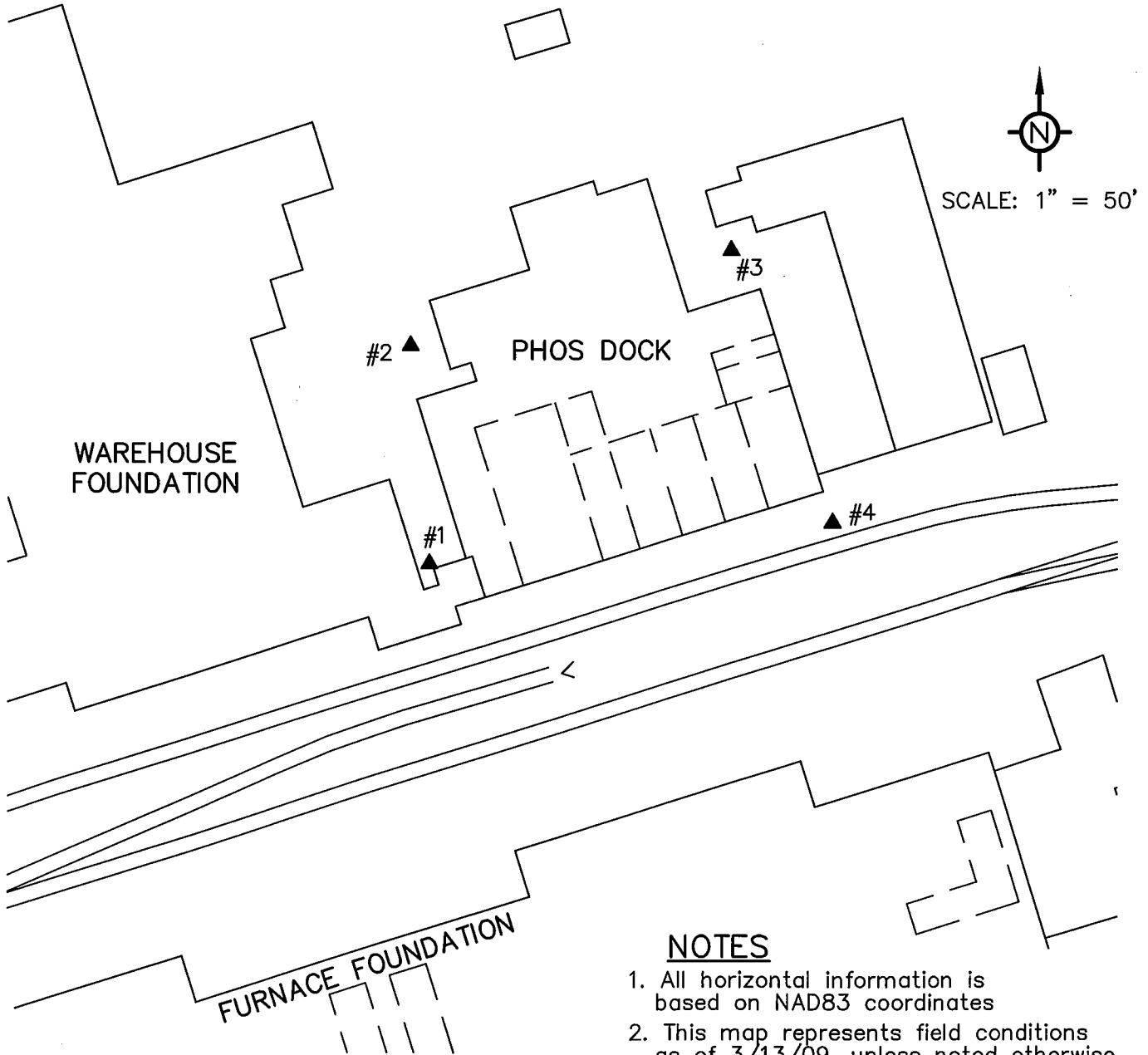
IDAHO POWER
COMPANY
PROPERTY

SK07042-04-S4

A & E ENGINEERING INC.
A&E JOB NO. 2007-042 | PLOTSCALE: 1=100

PHOSPHORUS DOCK AREA

PHOSPHINE SAMPLE SITES



NOTES

1. All horizontal information is based on NAD83 coordinates
2. This map represents field conditions as of 3/13/09, unless noted otherwise.

PH3 Sample #	Max ppm	Mean ppm	Temp F	Northing	Easting
#1	0.04	0.04	1.5	452250.7	556284.8
#2	0.00	0.00	-0.6	452323.3	556278.3
#3	0.00	0.00	1.4	452355.0	556386.0
#4	0.00	0.00	-0.7	452264.4	556419.7

SK07042-04-S2